

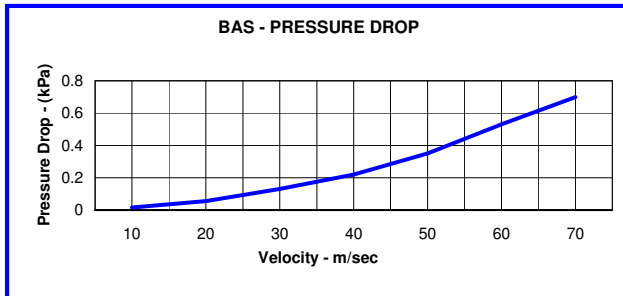
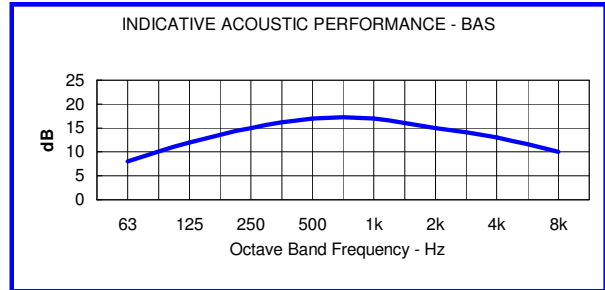
## BAS SERIES ABSORPTIVE BARWEST MUFFLERS

### DESCRIPTION:

BAS series units are efficient absorptive mufflers designed for maximum acoustic performance and minimal backpressure. Their high acoustic performance and lightweight makes them suitable for most industrial situations.

### DESCRIPTION:

These mufflers can be utilised on all types of **Reciprocating Engines**.



**Note:** Pressure Drop Graph is based on an exhaust temperature of 450° C

### CONNECTIONS:

Standard connections on all Barclay mufflers are Australian Standard Table "D" pattern flanges. Other flange patterns available. Gaskets, Bolt Kits and Companion flanges can be supplied with all mufflers as required.

### MOUNTING BRACKETS:

Fixed or sliding mounting brackets available as optional extras

### NOTE:

**ALL CALCULATIONS OR FIGURES SHOWN ARE ESTIMATED AND OR CALCULATED ON STANDARD ENGINE DATA AVAILABLE**

### CONSTRUCTION:

All Barclay mufflers are manufactured from high quality 250Mpa steel plate and fabricated using welding techniques to AS1554. BAS units are made to heavy duty specifications in accordance with our ISO 9000 quality accreditation, to ensure the product meets with the most demanding installations.

Models are also available in Stainless Steel.

### FINISH:

Standard finish on all mufflers is a High Temperature Black Enamel or Aluminium Heat-Cote applied over a grit blasted surface.

Alternative coatings are available such as Hot Aluminised Metal Spray, recommended for the most severe environments.

All Stainless Steel manufactured units are natural finish as manufactured

### ACCESSORIES AND OPTIONS:

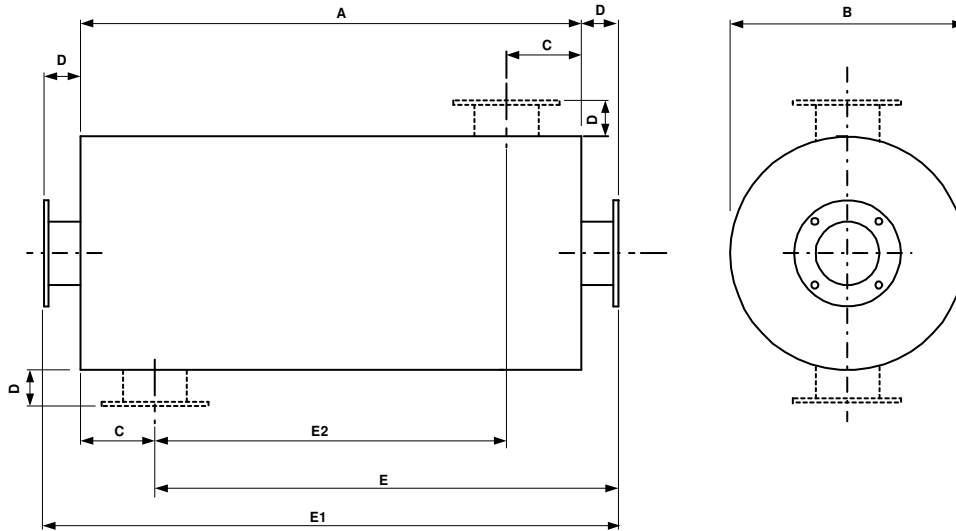
Barclay Engineering can provide a total exhaust solution for your noise problems. We can provide all associated components such as flexible exhaust bellows, piping, lagging and a complete design, fabrication and installation service. Call our sales department to discuss your needs.

12-16 Catalano Road Canning Vale WA  
PO Box 1653 Canning Vale WA 6970

Ph: (618) 9456 0300

Fax: (618) 9456 0388

Email: [info@barclayeng.com.au](mailto:info@barclayeng.com.au)



**DIMENSIONS AND WEIGHT**

SIZE	A	B	C	D	E	E1	E2	WGT-kg
BAS50	450	152	95	75	430	600	260	7
BAS65	450	152	103	75	422	600	244	8
BAS80	600	203	113	75	562	750	374	16
BAS100	850	254	128	75	797	1000	594	23
BAS125	850	254	148	100	802	1050	554	27
BAS150	1000	300	160	100	940	1200	680	44
BAS200	1200	450	188	100	1112	1400	824	75
BAS250	1200	450	223	100	1077	1400	754	84
BAS300	1200	477	248	125	1077	1450	704	99
BAS350	1500	540	283	125	1342	1750	934	148
BAS400	1500	600	310	125	1315	1750	880	175
BAS450	1800	675	340	125	1585	2050	1120	224
BAS500	2000	750	373	125	1752	2250	1254	284

**Larger Sizes Available on Request**

- Weights shown in table above are (Nominal) and are for muller only and do not include weights for mounting brackets etc
- All units can be slung from body or inlet/outlet necks. Lifting lugs can be provided as optional extra
- Unless specified otherwise, inlet and outlet flanges will be table "D" pattern
- Configuration data is as follows

**EE** = End Entry, **SE** = Side Entry, **EO** = End Outlet, **SO** = Side Outlet, **BOT** = Bottom of Muller, **TOP** = Top of Muller, **LHS** or **RHS** = Sides of Muller (IN RELATION TO THE ABOVE DIAGRAM)

**Note!** All Positions, **BOT**, **TOP**, **LHS**, **RHS** are taken from inlet end of muller (LEFT HAND SIDE OF ABOVE DIAGRAM)

**EXAMPLE:**

You have selected a muller to suit your 3 requirements such as, **Attenuation, Gas Flow and Backpressure**. We will assume a BAS200 size unit fits your requirement, with a bottom side entry, end outlet.

Your order specification would read as follows.  
finished in high temperature black enamel.

**BAS200-SE/BOT-EO**

Unless otherwise specified, all mufflers will be