

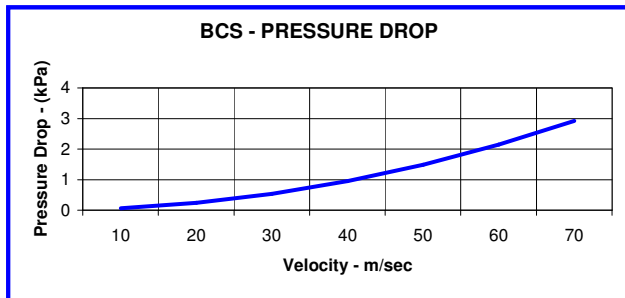
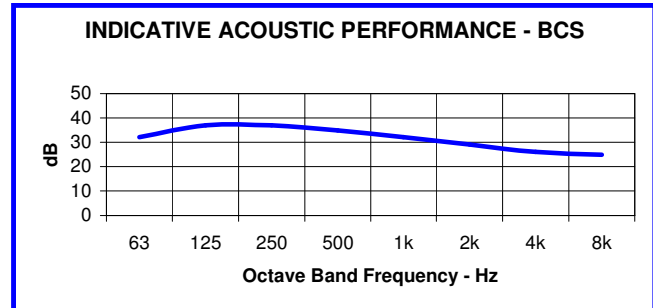
**BCS SERIES**  
**CRITICAL**  
**BARWEST MUFFLERS**

**DESCRIPTION:**

BCS series mufflers provide the highest attenuation for all critical situations. These mufflers are multi chamber reactive units that combine the performance of absorptive and reactive mufflers.

**DESCRIPTION:**

These mufflers can be utilised on all gas exhaust applications, where acoustics and airflow require maximum performance.



**Note:** Pressure Drop Graph is based on an exhaust temperature of 450° C

**CONNECTIONS:**

Standard connections on all Barclay mufflers are Australian Standard Table "D" pattern flanges. Other flange patterns available. Gaskets, Bolt Kits and Companion flanges can be supplied with all mufflers as required.

**MOUNTING BRACKETS:**

Fixed or sliding mounting brackets available as optional extras

**NOTE:**  
**ALL CALCULATIONS OR FIGURES SHOWN ARE ESTIMATED AND OR CALCULATED ON STANDARD ENGINE DATA AVAILABLE**

**CONSTRUCTION:**

All Barclay mufflers are manufactured from high quality 250Mpa steel plate and fabricated using welding techniques to AS1554. BCS units are made to heavy duty specifications in accordance with our ISO 9000 quality accreditation, to ensure the product meets with the most demanding installations.

Models are also available in Stainless Steel.

**FINISH:**

Standard finish on all mufflers is a High Temperature Black Enamel applied over a grit blasted surface.

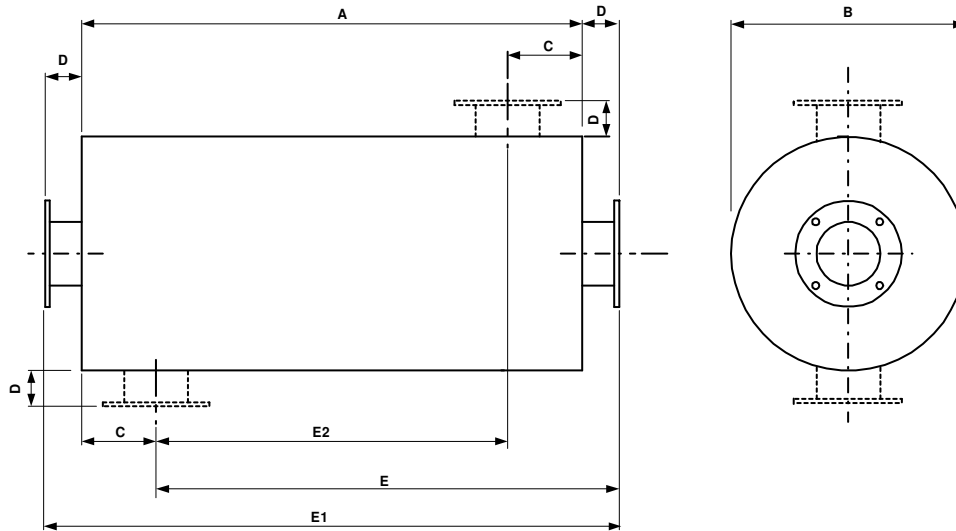
Alternative coatings are available such as Hot Aluminised Metal Spray, recommended for the most severe environments.

**ACCESSORIES AND OPTIONS:**

Barclay Engineering can provide a total exhaust solution for your noise problems. We can provide all associated components such as flexible exhaust bellows, piping, lagging and a complete design, fabrication and installation service. Call our sales department to discuss your needs.

**12-16 Catalano Road Canning Vale WA 6106**  
**PO Box 1653 Canning Vale WA 6970**

**Ph: (618) 9456 0300**  
**Fax: (618) 9458 0388**  
**Email: info@barclayeng.com.au**



**DIMENSIONS AND WEIGHT**

SIZE	A	B	C	D	E	E1	E2	WGT-kg
BCS50	750	254	75	75	750	900	600	22
BCS65	850	300	100	75	825	1000	650	38
BCS80	1000	350	125	75	950	1150	750	54
BCS100	1200	450	150	75	1125	1350	900	78
BCS125	1350	550	175	100	1275	1550	1000	108
BCS150	1500	600	175	100	1425	1700	1150	150
BCS200	1750	750	200	100	1650	1950	1350	221
BCS250	2400	850	225	100	2275	2600	1950	322
BCS300	3000	950	250	125	2875	3250	2500	467
BCS350	3300	1150	275	125	3150	3550	2750	928
BCS400	3400	1250	345	125	3180	3650	2710	1088
BCS450	3600	1400	370	125	3355	3850	2860	1333
BCS500	4200	1550	395	125	3930	4450	3410	1687

### **Larger Sizes Available on Request**

- Weights shown in table above are for muffler only and do not include weights for mounting brackets etc
- All units can be slung from body or inlet/outlet necks. Lifting lugs can be provided as optional extra
- Unless specified otherwise, inlet and outlet flanges will be table "D" pattern
- Configuration data is as follows  
**EE** = End Entry, **SE** = Side Entry, **EO** = End Outlet, **SO** = Side Outlet, **BOT** = Bottom of Muffler, **TOP** = Top of Muffler, **LHS** or **RHS** = Sides of Muffler (IN RELATION TO THE ABOVE DIAGRAM)  
**Note!** All Positions, **BOT**, **TOP**, **LHS**, **RHS** are taken from inlet end of muffler (LEFT HAND SIDE OF ABOVE DIAGRAM)

### EXAMPLE:

You have selected a muffler to suit your 3 requirements such as, **Attenuation, Gas Flow and Backpressure**. We will assume a BCS200 size unit fits your requirement, with a bottom side entry, end outlet

Your order specification would read as follows.  
 finished in high temperature black enamel.

**BCS200-SE/BOT-EO**

Unless otherwise specified, all mufflers will be